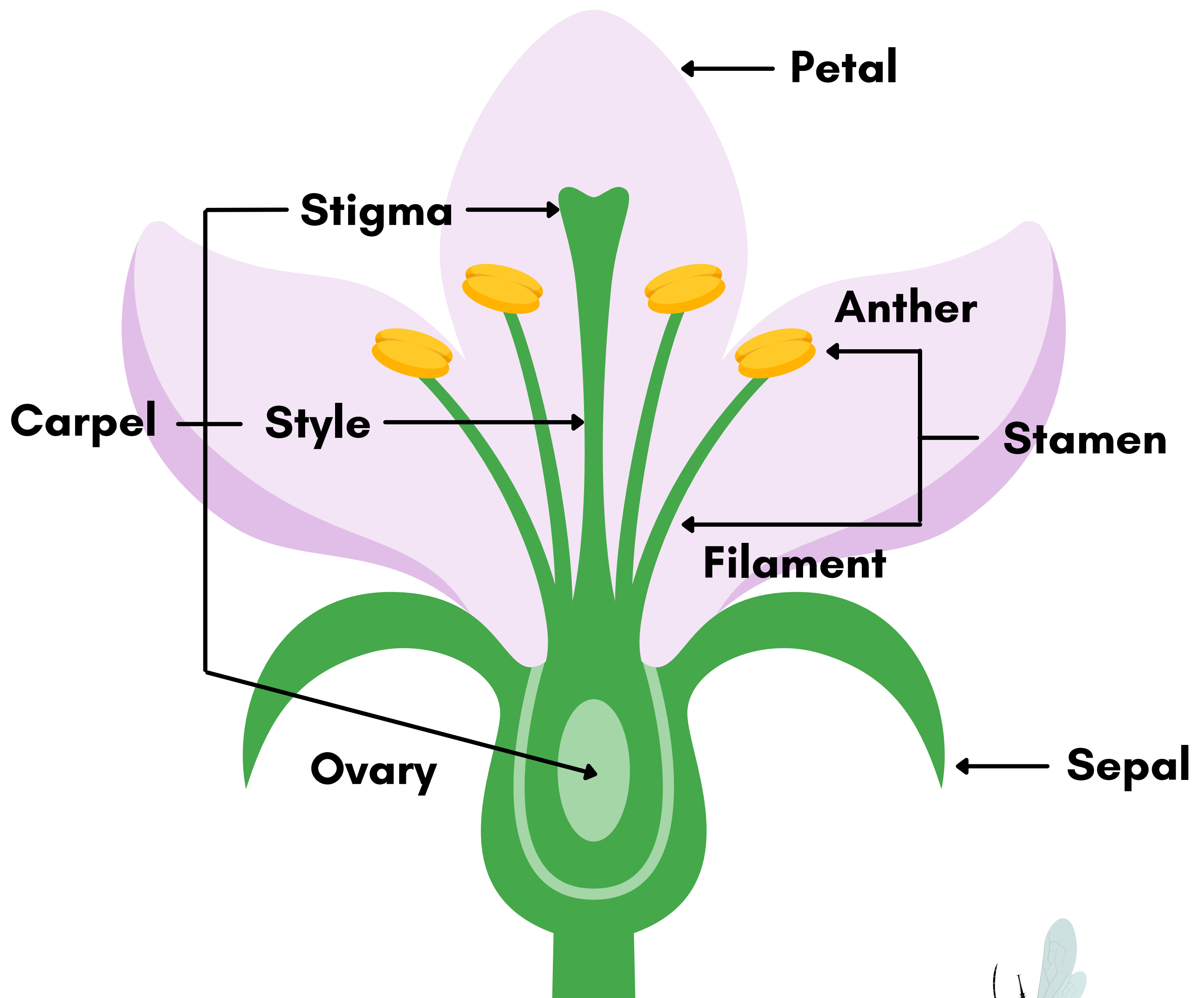


FLOWER Structure



Petal: Attracts insects and birds to the flower.

Sepal: Protects the developing flower.

Stamen: The male reproductive organ which produces pollen. Includes anther (containing male sex cells and produces pollen), and the filament (holds the anther in place).

Carpel: The female reproductive organ including the stigma (sticky end that receives pollen), style (holds the stigma in place), and ovary (contains the ovules which includes egg cells).